

Progesterone data

General Information from Dr. Hess

Progesterone 'low rise' (<2 ng/ml) occurs with the LH surge. This happens 2 days before ovulation. Ovulation is indicated by progesterone level 4.0 - 5.0 ng/ml. The eggs remain fertile 2 - 3 days after ovulation. Breeding should begin 2 days after low rise; confirmed by progesterone rise above 4.0.

Colorado Veterinary Specialists

Colorado Veterinary Specialists



Milan Hess DVM, DACT
Small Animal Reproductive Specialist

www.coloradoveterinarianspecialists.com

HOURS
7:30 – 5:00 p.m.
Monday thru Friday

303.794.1188
303.794.4881 fax

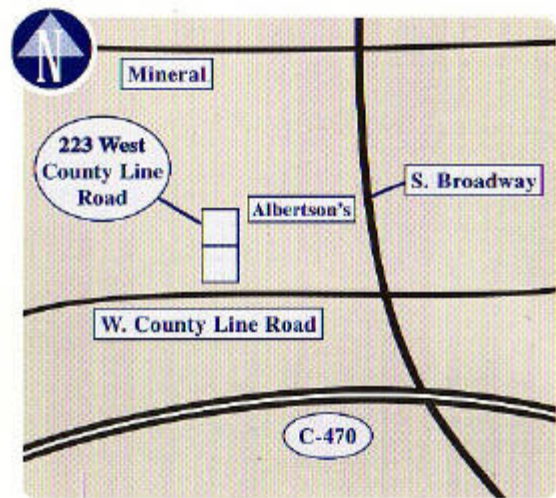
24-hour care provided


SERVICES OFFERED:

- Testing for genetic diseases
- Pregnancy diagnosis
- Transcervical insemination
- Surgical insemination
- High-risk pregnancy management
- Elective & emergency C-section
- Medical treatment of pyometra
- Medical pregnancy termination

Colorado Veterinary Specialists

- Breeding management
 - Fresh
 - Chilled
 - Frozen semen
- Semen freezing & on-site storage
- Reproductive tract disease diagnosis and treatment
- Male and female breeding soundness evaluations
- Semen collection for shipment





Colorado Veterinary Specialists
223 West County Line Road
Littleton, CO 80129
303.794.1188
fax 303.794.4881

Notes from Julie's reproductive vet:
Every dog is different.
Ovulate from 4 - 10 ng/ml

Interpretive Comment from Chandra's progesterone test
Ovulation Timing - Predicting the day of ovulation is best achieved by combining serial progesterone levels and vaginal cytology samples. The time of the LH surge can be estimated as the day that the progesterone concentration first exceeds 2 ng/ml, as long as

the progesterone concentration continues to rise thereafter. Dogs will ovulate within 36 - 48 hours of the LH surge. The best times for breeding are days 3 through 6 after the LH surge.

Rosie

March 5, 2007 - first noticed vaginal bleeding

March 13 - progesterone 2.2 ng/ml

March 16, 2007 - Aled with fresh semen (Katu/Kham ma)

March 16, 2007 - 3.8 ng/ml

March 19, 2007 - Aled with fresh semen (Katu/Kham ma)

March 19, 2007 - 4.1 ng/ml (recommended because progesterone rose 2.2 to 3.8/wanted to make sure it kept rising)

March 21, 2007 - Aled to Katu/Kham ma (didn't recommend further progesterone; it would be an added 'unnecessary' cost - she either has or won't ovulate -ultrasound is next step - could run progesterone then.)

Ultrasound - conceived, reabsorbed.

Cinsha

March 7, 2007 - first noticed vaginal bleeding

March 12, 2007 - 4.4 ng/ml

March 14, 2007 - Aled with fresh chilled semen (Vajra - 76% normal - excellent)

March 16, 2007 - Aled with fresh chilled semen (Vajra)

Ultrasound - conceived, reabsorbed.

Ponya

March 13, 2007 - first noticed vaginal bleeding

March 16, 2007 - 0.9 ng/ml

March 19, 2007 - 0.9 ng/ml

March 21, 2007 - 3.1 ng/ml

March 24, 2007 - 14.5 ng/ml

March 24, 2007 - Aled with fresh semen (Drepung)

March 26, 2007 - no further AIs recommended due to Progesterone level.

Ultrasound - didn't conceive.

Nagpo

March 15, 2007 - first noticed vaginal bleeding

March 24, 2007 - 9.3 ng/ml

March 26, 2007 - considered too far past ovulation to breed. Due to the weekend, two days passed before these results were back. I attempted to AI in the evening, but the collection was bloody (due to my own inexperience, I'm sure). I examined under microscope; found only blood cells.

March 29, 2007 - Aled with fresh semen (Dorje) Collection and insemination went well.

No puppies.

C'est La Vie

First noticed bleeding May 26, 2007

May 31, 2007 - 1.0 ng/ml

June 5, 2007 - 1.0 ng/ml

June 8, 2007 - 1.9 ng/ml

June 11, 2007 - 5.8 ng/ml (day 17)

whelped 1 male puppy

Ranpa

First noticed bleeding November 25, 2006

Picked her up in Grand Island November 30, 2006

December 3, 2007 - 3.7 ng/ml Recommended breeding in 2 day

December 5, 2007 - 13.2 ng/ml Aled to Keeper - Dr. Hess recommended no further AIs, but to let them naturally, if wanted.

December 8, 2007 - bred naturally

January 9, 2008 - ultrasound - not pregnant



Possible resorption site or uterine cyst or uterine fluid. Recheck if sick.

C'est La Vie

- December 11, 2007 - first noticed bleeding
- December 22, 2007 - 4.8 ng/ml
- December 24, 2007 - Aled to Fernando
- December 25, 2007 - Aled to Fernando
- February 23, 2008 - scheduled c-section - 1 red/gold female puppy - 6.2 oz.

Nagpo

- December 20, 2007 - first noticed bleeding (hadn't been watching)
- December 23, 2007 - bred naturally with Keeper
- December 25, 2007 - bred naturally with Keeper
- January 24, 2008 - ultrasound..puppies!



February 19, 2008 - whelped 3 puppies - 1 male; 2 females

Chandra

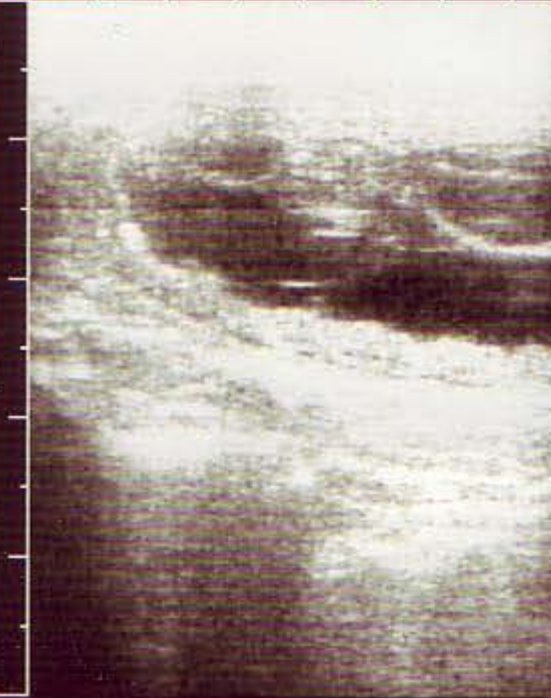
April 13, 2008 - first noticed bleeding

April 16, 2008 - 5.05 ng/ml
April 17, 2008 - PM - bred naturally with Keeper
April 18, 2008 - AM - bred naturally with Kham ma
April 18, 2008 - PM - bred naturally with Keeper
April 19, 2008 - AM - bred naturally with Kham ma
April 20, 2008 - AM - bred naturally with Keeper
May 15, 2008 - ultrasound

PT: CHANDRA ROTHMAN

15-MAY-08
10:16:20AM
L7EF 17Hz
10-5 50mm
UTERUS

PWR = 0dB
55dB 0/1/I
GAIN= 19dB



PT: CHANDRA ROTHMAN

15-MAY-08
10:15:58AM
L7EF 17Hz
10-5 50mm
UTERUS

PWR = 0dB
55dB 0/1/I
GAIN= 19dB





June 16 - 18, 2008 is her due date, according to Dr. Hess. This is based on the ovulation date, determined by the progesterone rise above 5 ng/ml on April 16th. Due date is 61 - 63 days after ovulation. Chandra had colitis about one week after returning home from breeding. Knowing about her possible pregnancy, her veterinarian gave her an injection of ampicillin and Rx: amoxicillin, which were later okayed by Dr. Hess.