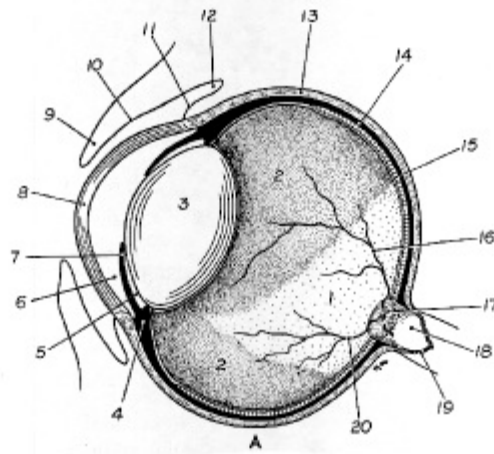
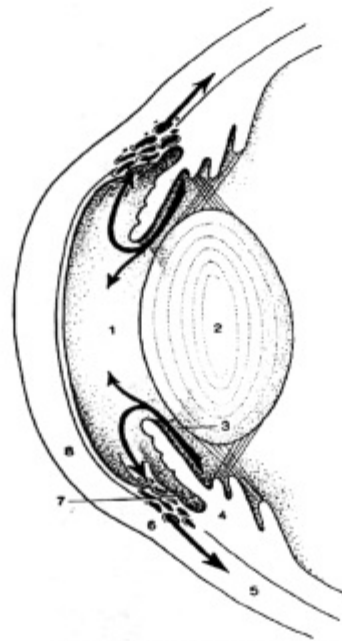


Structure of the eye



- | | |
|----------------------------|----------------------------------|
| 1. Tapetum lucidum | 11. Bulbar conjunctivum |
| 2. Tapetum nigrum | 12. Fornix |
| 3. Lens | 13. Sclera |
| 4. Ciliary body | 14. Choroid |
| 5. Posterior chamber | 15. Retina |
| 6. Anterior chamber | 16. Superior retinal vein |
| 7. Iris | 17. Optic disc |
| 8. Cornea | 18. Optic nerve |
| 9. Upper eyelid | 19. Dura |
| 10. Palpebral conjunctivum | 20. Inferior medial retinal vein |



The flow (arrows) of aqueous humor.

1. Anterior chamber; 2. lens; 3. posterior chamber; 4. ciliary body; 5. sclera; 6. venous plexus; 7. pectinate ligament; 8. cornea.